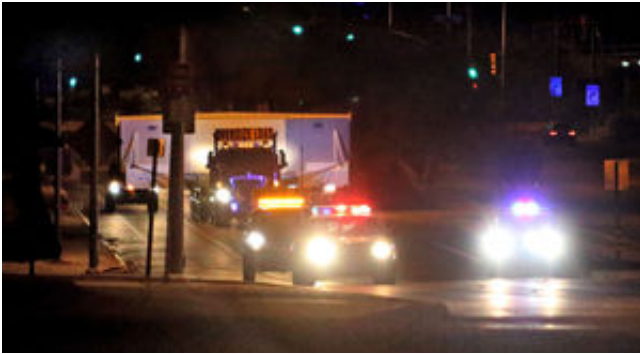


\$20 million mirror makes slow Tucson journey



MAY 19, 2015 5:01 AM • [TOM BEAL ARIZONA DAILY STAR](#)

How do you move a \$20 million mirror?

Very slowly and carefully.

The mirror for the Large Synoptic Survey Telescope moved eight miles to temporary storage at Tucson International Airport Tuesday morning — a prelude to its journey to an Andean mountaintop in Chile.

There it will take the deepest, widest and fastest survey of the cosmos ever conducted.

Its all-sky survey is expected to aid in the search for the mysterious forces of dark energy and dark matter, uncover new exoplanets and reveal new mysteries.

Insurance for the three-hour move, accomplished before dawn Tuesday, cost \$25,000. The mirror is one-of-a-kind and pretty much irreplaceable.

Precision Heavy Haul of Phoenix carried the 30-foot wide, 14-foot tall metal crate on a specially designed heavy haul bed too big to travel the roads in daylight.